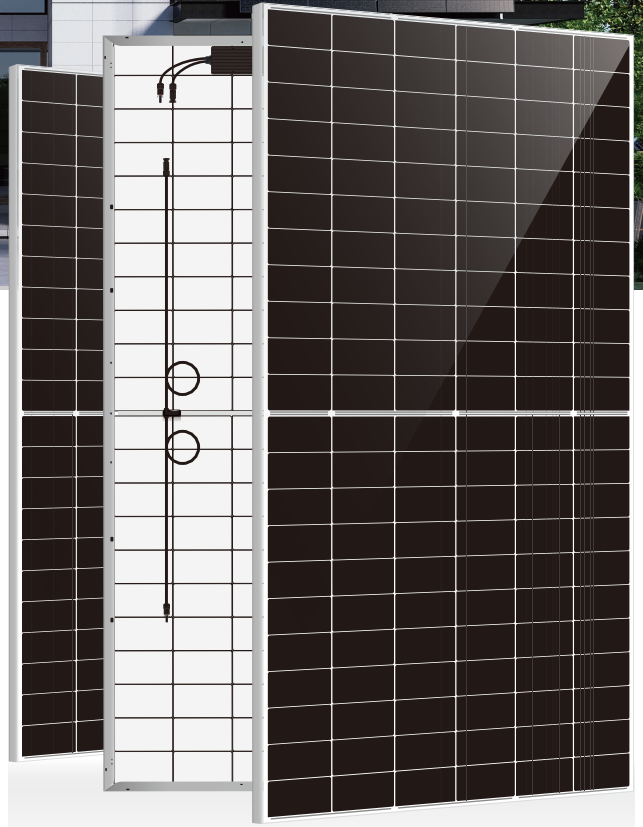




SolarUnit — DAH-SU1K5ED

(1 Microinverter with 3 Modules)

The World's First Integrated PV System



Innovative Integrated System for Faster Installation

- Integrated system with factory pre-installed microinverters, design-free, more convenient installation, more labor-saving.
- Each unit operates independently without installation angle restriction, increasing the installed capacity on complex roofs.



Unique System Solution for Higher Power Generation

- Perfect matching of modules and microinverters, higher system power generation efficiency.
- Innovative solution, peak conversion efficiency of 97.61% with the third generation semiconductor GAN technology, smaller size.
- Combines the cost-effective advantages of string microinverters and the traditional microinverters in safety, flexibility and high electricity generation.



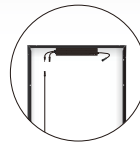
Remote One-click Switch for Safety and Security

- Remote monitoring and quick shutdown through intelligent cloud platform.



Full-Screen Technology, More Power Generation

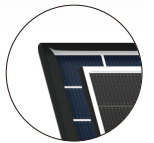
- Global patented Full-Screen Module prevents dust accumulation, reduces power generation loss caused by dust accumulation compared to traditional modules, increases power generation by 6-15%.
- No frame blocking on the front side of the module, cleaner from rainwater, lower operation and maintenance costs.



Microinverter Pre-installed

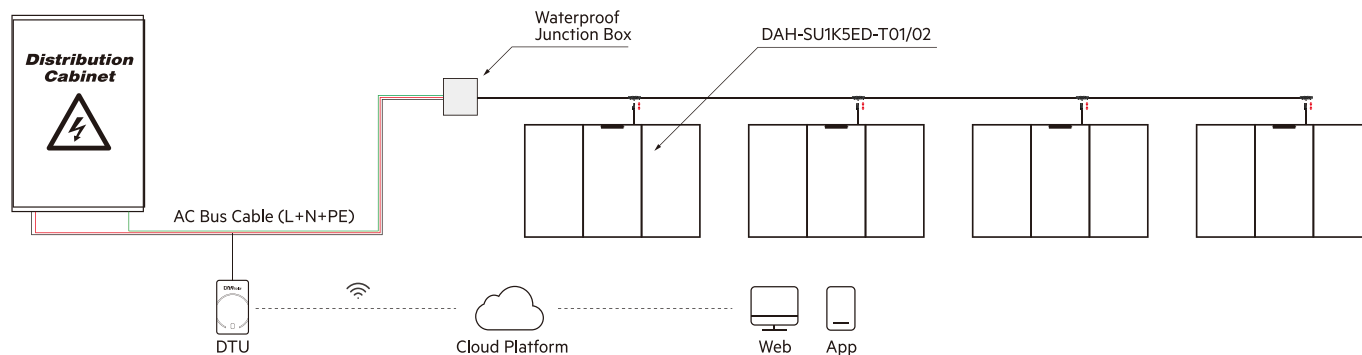


Innovative Design Microinverter



Full-Screen PV Module

System Application



Configuration List

SYSTEM LAYOUT	DAH-SU1K5ED-T01	DAH-SU1K5ED-T02
Adapted PV Module Power	610W×3	620W×3
DC INPUT		
Maximum Input Voltage	470V	
MPPT Voltage Range	70~400V	
Maximum Input Current	7.5A	
Start-up Voltage (Operating Voltage Range)	50V (0~470V)	
AC OUTPUT		
Rated Output Power	1500VA	
Nominal Output Voltage/Range*	220/230V (180~270V)	
Nominal Frequency/Range*	50Hz (45~55Hz), 60Hz (55~65Hz)	
Maximum Output Current	6.82A/6.52A	
Power Factor (Default/Adjustable)	> 0.99 (0.9 leading...0.9 lagging)	
Total Harmonic Distortion	<2%	
Maximum Units Per Branch (12AWG Cable)**	3 Units	
Maximum Units Per Branch (10AWG Cable)**	4 Units	
EFFICIENCY		
Peak Efficiency	97.61%	
European Efficiency	96.02%	
Static MPPT Efficiency	>99.9%	
Night Power Consumption	0W	
BASIC PARAMETERS		
Ambient Temperature Range	-40°C~+70°C	
Storage Temperature Range	-40°C~+85°C	
Protection Level	IP67	
Cooling	Natural Cooling	
Inverter Size (W×H×D)	420×112×44mm	
Inverter Weight	3.7kg	
Module Size (L×W×T)	2382×1134×32mm(×3)	
System Weight	100.6kg	
Noise	<10dB	
Communication	Wi-Fi/PLC	
Operational Platform	DAH Smart Cloud Platform	
System Integration	Integration of System and Module	
PV Module Warranty	25 years for Mateial&Technology / 30 years for Linear Power Output	
Inverter Warranty	12 years	
Certifications of Inverter	Ordinance No.515; IEC/EN 62109-1/-2; IEC/EN 61000-6-1/-3 IEC 61215; IEC 61730; CE; INMETRO	
Certifications of PV Module	ISO 45001 2018; ISO 14001 2015; ISO 9001 2015	

Note: * The rated voltage/frequency range can be changed according to the requirements of the local power authority.

** Refer to local electrical code requirements to determine the number of microinverters that can be connected to each branch.